

110 Boerum Place's Exterior Progresses In Cobble Hill, Brooklyn



110 Boerum Place. Designed by Brent Buck Architects.

Construction is progressing on 110 Boerum Place, a six-story residential building in [Cobble Hill](#), Brooklyn. Designed by Brent Buck Architects and developed and built by Avdoo in collaboration with Aksoy Holding, the structure will span nearly 65,000 square feet and yield 21 condominium units. The property is located along Boerum Place between Pacific and Dean Streets.

Work has shifted to the façade since [our last update](#) in late May, when construction was about to top out on the northern mechanical bulkhead and the reinforced concrete superstructure stood fully exposed. Scaffolding and netting now cover the building as crews work to install the red brick envelope and grid of floor-to-ceiling windows. YIMBY expects the façade to start becoming visible sometime in early 2026.



110 Boerum Place. Photo by Michael Young.



110 Boerum Place. Photo by Michael Young.



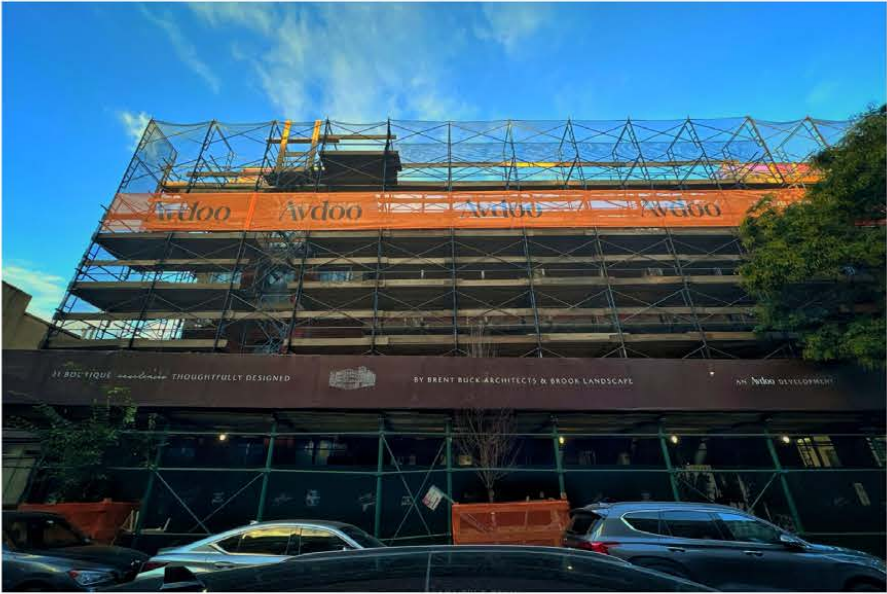
110 Boerum Place. Photo by Michael Young.



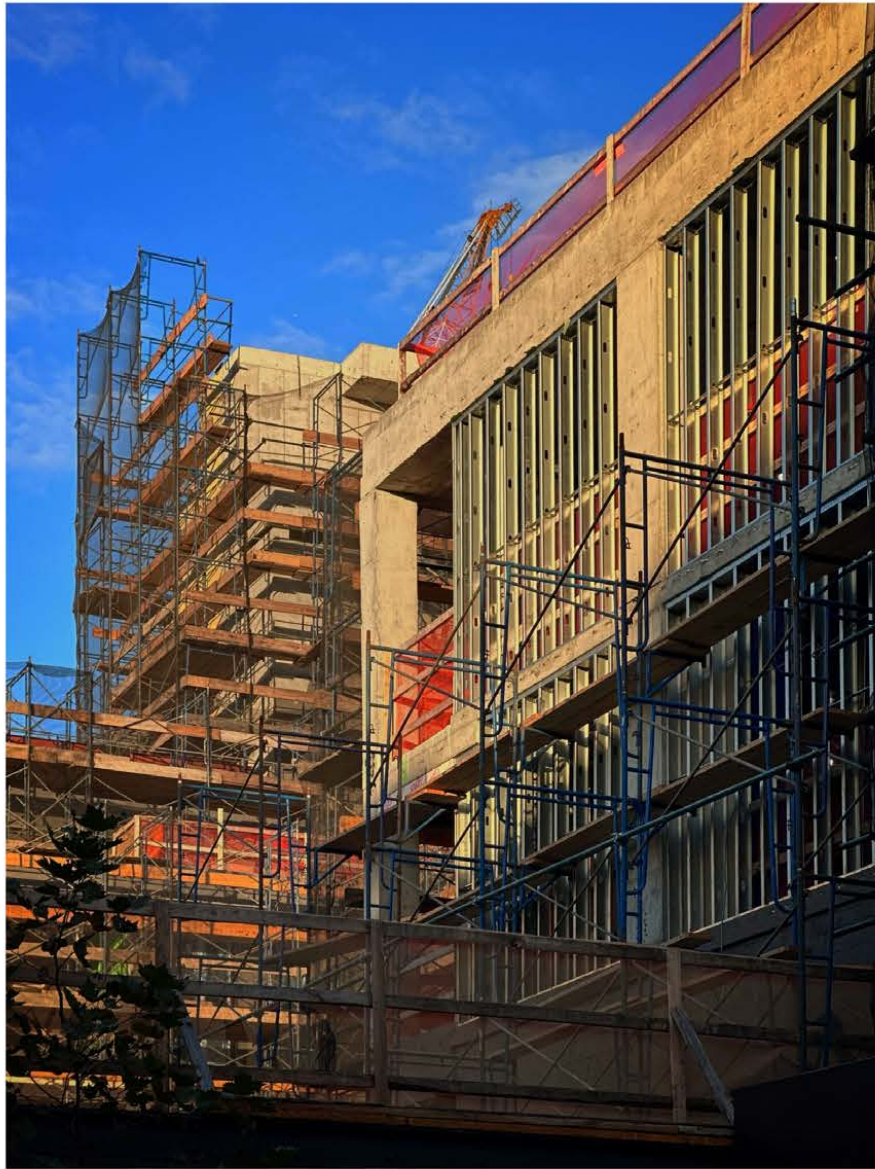
110 Boerum Place. Photo by Michael Young.



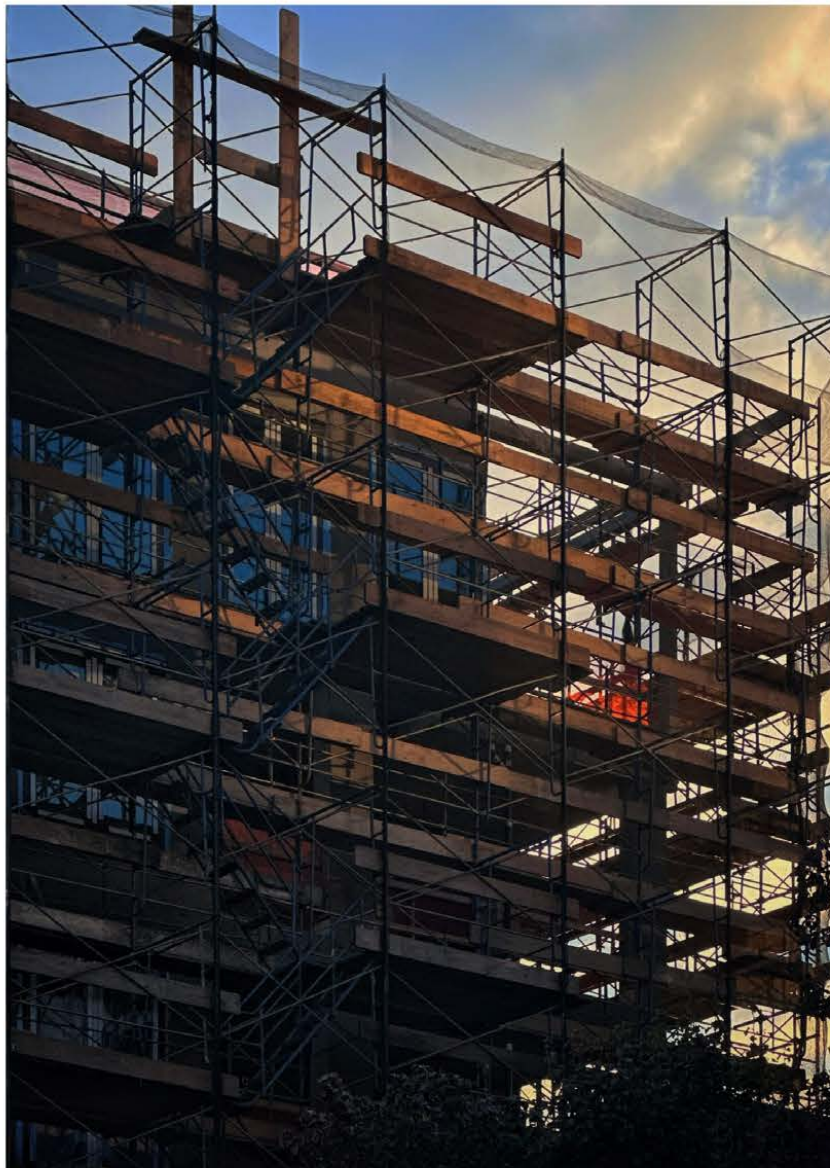
110 Boerum Place. Photo by Michael Young.



110 Boerum Place. Photo by Michael Young.



110 Boerum Place. Photo by Michael Young.



110 Boerum Place. Photo by Michael Young.

The renderings in the main photo and below preview the façade with its rounded corners and arched ground-floor entrances. The building will feature numerous loggia terraces, particularly on the upper levels and on the broad eastern elevation along Boerum Place.



110 Boerum Place. Designed by Brent Buck Architects.



110 Boerum Place. Designed by Brent Buck Architects.



110 Boerum Place. Designed by Brent Buck Architects.

Units at 110 Boerum Place will be available in two- to five-bedroom layouts, and each will come with private outdoor space. Residential amenities will span over 11,000 square feet and will include on-site parking, a lobby, storage, and bike storage. Brook Landscape is serving as the landscape architect.

The nearest subways from the property are the F and G trains at the Bergen Street station; the 2, 3, 4, and 5 trains at the Borough Hall station; the A, C, F, and R trains at the Jay Street-MetroTech station; the 2 and 3 trains at the Hoyt Street station; and the A, C, and G trains at the Hoyt-Schermerhorn Streets station.

110 Boerum Place is expected to be finished in spring 2027, as noted on site.