

110 Boerum Place Tops Out In Cobble Hill, Brooklyn



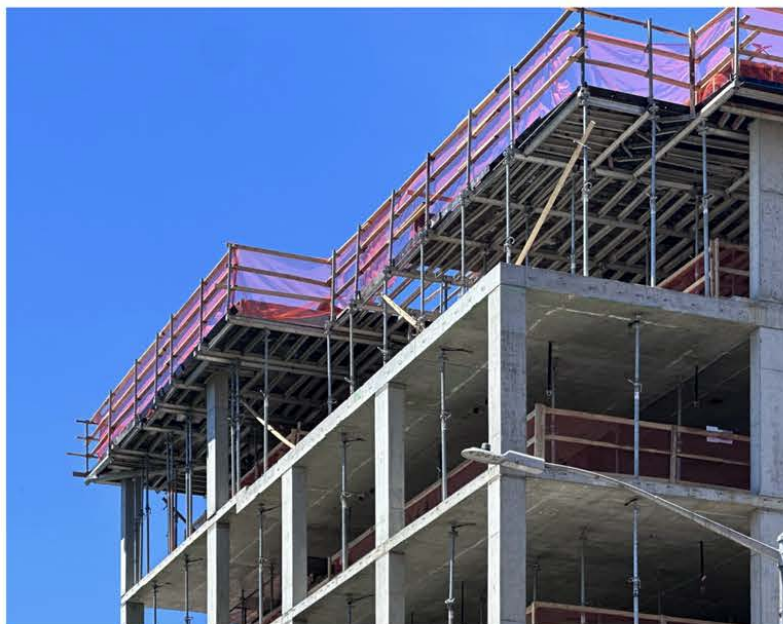
110 Boerum Place. Designed by Brent Buck Architects.

Construction has topped out on 110 Boerum Place, a six-story residential building in [Cobble Hill](#), Brooklyn. Designed by Brent Buck Architects and developed and built by Avdoo in collaboration with Aksoy Holding, the structure will span nearly 65,000 square feet and yield 21 condominium units. The property is located along Boerum Place between Pacific and Dean Streets.

A tremendous amount of progress has occurred since [our last update](#) in mid-October, when excavation was still ongoing on the corner lot. The reinforced concrete superstructure now stands constructed to its final floor, which is still setting with the aid of formwork. Only the mechanical bulkhead on the northern side of the building has yet to be built. Based on the pace of progress, this is likely to occur before the end of the month.



110 Boerum Place. Photo by Michael Young.



110 Boerum Place. Photo by Michael Young.



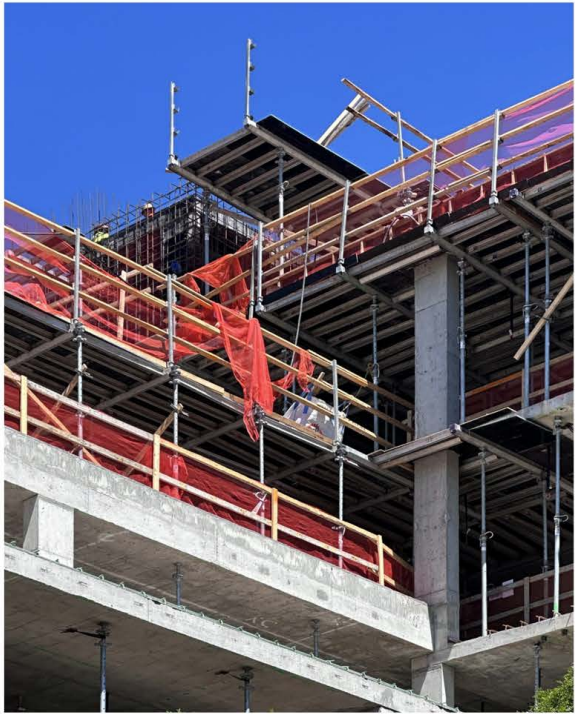
110 Boerum Place. Photo by Michael Young.



110 Boerum Place. Photo by Michael Young.



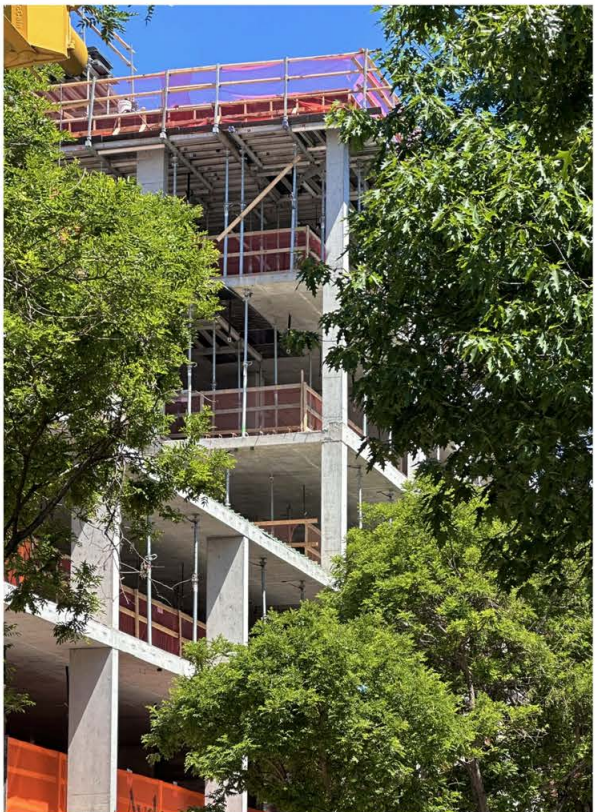
110 Boerum Place. Photo by Michael Young.



110 Boerum Place. Photo by Michael Young.



110 Boerum Place. Photo by Michael Young.



110 Boerum Place. Photo by Michael Young.



110 Boerum Place. Photo by Michael Young.



110 Boerum Place. Photo by Michael Young.

The property was formerly occupied by two low-rise commercial buildings at 96 and 110 Boerum Place, as seen in the below Google Street View image taken before their demolition following a five-alarm fire in March 2022. The developers purchased the assemblage from Hidrock Properties for \$30.5 million in January 2017.



Image via Google Maps



Image via Google Maps



Image via Google Maps



Image via Google Maps

The rendering in the main photo depicts the exterior composed of an earth-toned brick façade framing a grid of recessed floor-to-ceiling windows and extensive open voids, which are shown populated with pocketed landscaped terraces. The northeastern corner rises two stories higher than the bulk of the structure and culminates in a brick-clad mechanical bulkhead. The parapet atop the four-story section of the building appears to be topped with an expansive roof deck.

Units at 110 Boerum Place will come in two- to five-bedroom layouts, and each will come with private outdoor space. Residential amenities will include on-site parking, a lobby, storage, and bike storage.

The nearest subways from the property are the F and G trains at the Bergen Street station; the 2, 3, 4, and 5 trains at the Borough Hall station; the A, C, and G trains at the Jay Street-MetroTech station; the 2 and 3 trains at the Hoyt Street station; and the A, C, F, and R trains at the Hoyt-Schermerhorn Streets station.

110 Boerum Place is expected to be finished in spring 2027, as noted on site.