

THE PLAN

110 BOERUM PLACE, A BROOKLYN OASIS OF ELEGANCE

NEW DETAILS UNVEILED ABOUT THE COBBLE HILL BUILDING, WHICH REINTERPRETS THE HISTORIC BROWNSTONES THROUGH 21 DISTINCTIVE RESIDENCES AND SHARED SPACES DESIGNED TO FOSTER COMMUNITY WELL-BEING

BRENT BUCK ARCHITECTS



Avdoo has shared new details about **110 Boerum Place**, the first condominium development by **Brent Buck Architects**, now taking shape in the heart of **Cobble Hill** in **Brooklyn**. Created in collaboration with **Brook Landscape**, the building will feature **21 residences** that blend **contemporary living** with **historic character**, all within a distinguished setting.

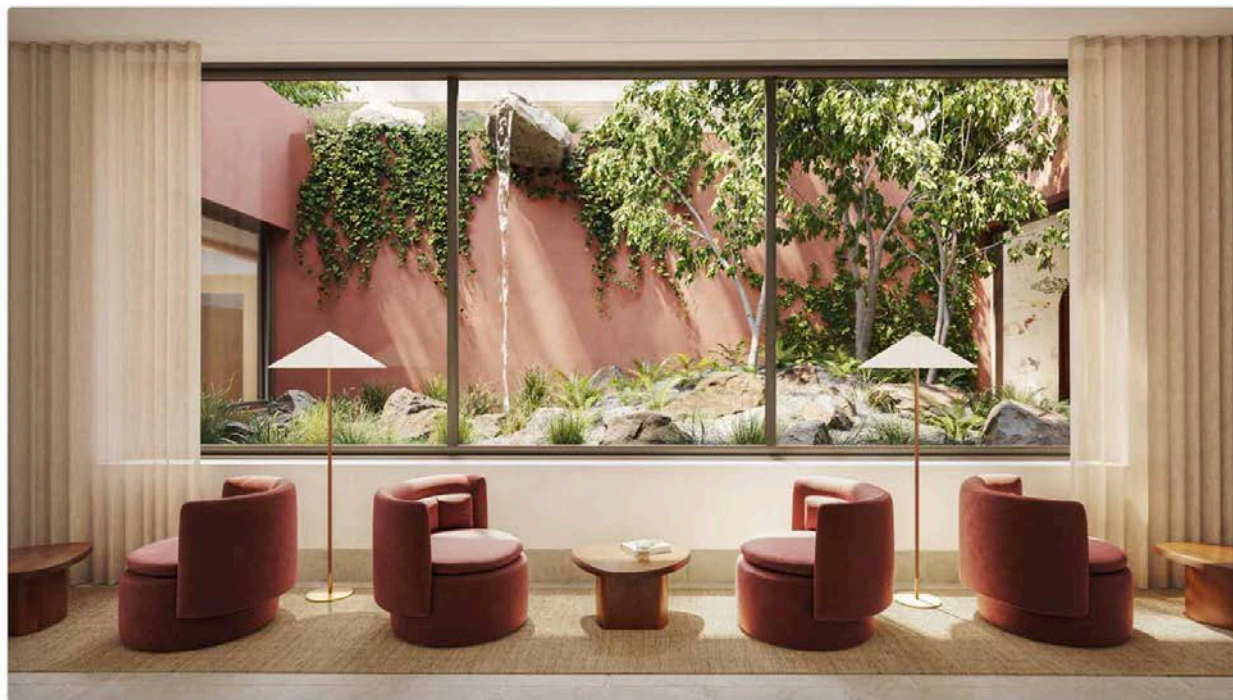
110 Boerum Place, Integrating into the urban fabric



The project sensitively **reinterprets Brooklyn's brownstones**, the city's iconic row houses. Built mainly between the **19th and early 20th centuries in New York**—particularly in **Brooklyn and Manhattan**—these traditional residences are distinguished by their **brown sandstone facades**, stoops leading to **raised entrances**, and interiors with **high ceilings, decorative fireplaces, and handcrafted details**. They embody the historic charm of neighborhoods like Cobble Hill, combining **classical elegance with a sense of urban community**.

110 Boerum Place integrates seamlessly into the architectural fabric of its residential context, with **red brickwork** that resonates with the historic **brownstones**. The **six-story building** spans approximately **65,000 square feet**, occupying the entire block between **Dean Street and Pacific Street**. Its **strategic location** offers residents easy access to cultural institutions and green spaces such as **Cobble Hill Park and Brooklyn Bridge Park**.

Distinctiveness, well-being, and community



The architect conceived the apartments as units with their own **distinct identity**, giving each of the **21 residences** a **unique character**. They stand out for their **artisanal craftsmanship** and **meticulous attention to detail**, reflecting a pursuit of **tactile and visual quality** that combines **elegance with everyday comfort**.

Generous floor plans and **multiple exposures** maximize **natural light**, while **terraces and open spaces** create a seamless **connection to the outdoors**. Refined materials — **marble, brass, white oak** — and **custom finishes** lend the interiors a **sophisticated character** and a **warm, welcoming atmosphere**.

At the same time, the development places particular emphasis on the ideas of **well-being and community**. At the center of the building lies an **internal courtyard**, an **urban retreat** where the visual and acoustic presence of **water** creates a sense of **calm and tranquility**. More than **10,000 square feet of amenities** include **sunlit social spaces, parking, private storage, and bicycle facilities**.

110 Boerum Place thus seeks to establish itself as an example of **residential living in Brooklyn** that unites **architectural heritage with contemporary living** within a neighborhood of strong **historical character and identity**.



All renderings: © Darcstudio, courtesy of DADA Goldberg